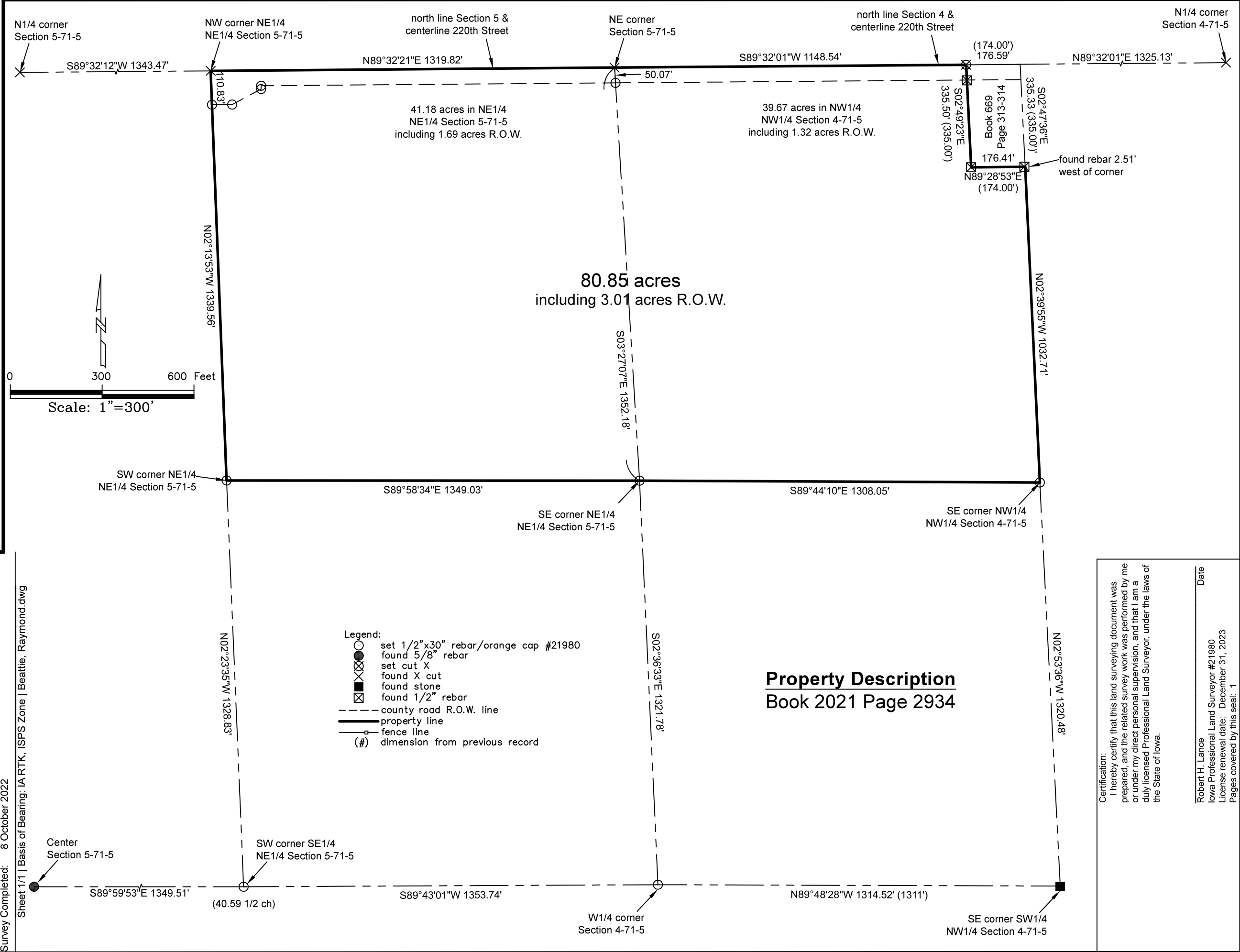


# RETRACEMENT PLAT OF SURVEY

## INDEX LEGEND

Property Location: part NW1/4 NW1/4 Section 4 & NE1/4 NE1/4 Section 5  
Township 71 North, Range 5 West, Henry County, Iowa  
Surveyor: Robert H. Lance, Iowa P.L.S. #21980, rob@lancesurveying.com  
Return Document to: Lance Surveying Services (319) 986-6779  
1505 North Broadway Street, Mt. Pleasant, IA 52641  
Survey Requested by: Steffes Group  
Proprietor: Raymond Beattie  
Survey Completed: 8 October 2022

Sheet 1/1 | Basis of Bearing: IA RTK, ISPS Zone | Beattie, Raymond.dwg



Scale: 1"=300'

0 300 600 Feet

- Legend:**
- set 1/2"x30" rebar/orange cap #21980
  - found 5/8" rebar
  - set cut X
  - found X cut
  - found stone
  - found 1/2" rebar
  - county road R.O.W. line
  - property line
  - fence line
  - (#) dimension from previous record

80.85 acres  
including 3.01 acres R.O.W.

41.18 acres in NE1/4  
NE1/4 Section 5-71-5  
including 1.69 acres R.O.W.

39.67 acres in NW1/4  
NW1/4 Section 4-71-5  
including 1.32 acres R.O.W.

found rebar 2.51'  
west of corner